

PRESSURE INJURY PREVENTION

Pentaflex®

Foam mattress range



The Pentaflex range has been developed to provide a 24 hour care solution. The range includes a mattress replacement, mattress overlay and seat cushion.

Pentaflex Range

The Pentaflex range has been designed with a wide range of patients in mind, including those with superficial pressure injuries (when used in combination with an overall care plan).



24 Hour Care Package - Seat cushion available

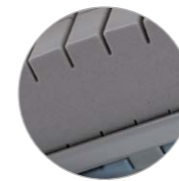


A mattress overlay is also available and is easy to install



CASTELLATION

Castellations of variable depths covering head, shoulder, torso, calves and heels - create five zones of protection.



FIRM EDGE WALLS

Firm edge perimeter designed to assist with patient transfer.



SUITABLE FOR PROFILING BEDS

Suitable for use in the gatched or supine position.

Safe and convenient for patients and carers

The Pentaflex mattress has been designed to provide effective pressure redistribution.

The Pentaflex mattress replacement is available in multiple sizes and has been tested for X-Ray translucency¹ and is suitable for CPR². In addition, the overlay includes corner securing straps for extra security. A Paediatric as well as a Bariatric version with optional end or side pads are also available.

The Pentaflex mattress is available as a 2-way turn or a 4-way turn version. A TurnTable Guide advises about mattress turning regimes.

Cover features

- Ultra two way stretch
- Vapour permeable
- Water resistant
- Infection Control is aided by Antimicrobial properties in the cover material
- Concealed zip
- Easy to clean and maintain
- Clearly marked covers with TurnTable[®] guide and washing instruction



Optional Squabs - Available for extending beds



TurnTable Guide - All Pentaflex mattress replacement systems carry the TurnTable Guide

Specifications*

2-WAY TURN MATTRESS REPLACEMENT	150KG (330 LBS) MAX. PATIENT WEIGHT ORDER CODE	250KG (550 LBS) MAX. PATIENT WEIGHT ORDER CODE	DIMENSIONS H X W X D**
MR Acute	150SL198/086	250SL198/086	1980 x 860 x 150 mm (78" x 33¾" x 6")
MR Standard	150SL190/092	250SL190/092	1900 x 920 x 150 mm (74¾" x 36¼" x 6")
MR Euro Wide	150SL204/092	250SL204/092	2040 x 920 x 150 mm (80¾" x 36¼" x 6")
MR Euro Narrow	150SL200/080	250SL200/080	2000 x 800 x 150 mm (78¾" x 31½" x 6")

Lifetime expectancy: 5 years

4-way turn mattress replacement	120 kg (265 lbs) Max. Patient Weight Order Code	250 kg (550 lbs) Max. Patient Weight Order Code	Dimensions H x W x D
MR Acute	120PM198/086	250PM198/086	1980 x 860 x 170 mm (78" x 33¾" x 6¾")
MR Standard	120PM190/092	250PM190/92	1900 x 920 x 170 mm (74¾" x 36¼" x 6¾")
MR Euro Double	120PM190/138	250PM190/138	1900 x 1380 x 170 mm (74¾" x 54¼" x 6¾")
MR Euro Wide	120PM204/092	250PM190/92	2040 x 920 x 170 mm (80¾" x 36¼" x 6¾")

Lifetime expectancy: 4 years for foam core and 2 years for cover

Overlay systems	Order Code	Dimensions H x W x D
OL Acute	PO198/086	1980 x 860 x 95 mm (78" x 33¾" x 3¾")
OL Standard	PO190/092	1900 x 920 x 95 mm (74¾" x 36¼" x 3¾")
OL Double	PO190/138	1900 x 1380 x 95 mm (74¾" x 54¼" x 3¾")
OL Euro Wide	PO204/092	2040 x 920 x 95 mm (80¾" x 36¼" x 3¾")

Lifetime expectancy: 1 year for foam and cover

Related products	Order Code	Max. patient weight	Dimensions H x W x D
Pentaflex Plus	450PM206/092	450 kg (992 lbs)	2060 x 920 x 170 mm (81" x 36¼" x 6¾")
Paediatric Pentaflex	25PM130/066	25 kg (55 lbs)	1300 x 660 x 115 mm (51" x 26" x 4½")
Seat Cushion	PS043/043	90 kg (198 lbs)	430 x 430 x 85 mm (17" x 17" x 3¾")
Squab	SQB1	N/A	170 x 860 x 170 mm (6¾" x 33¾" x 6¾")
Squab	SQB2	N/A	170 x 860 x 150 mm (6¾" x 33¾" x 6")

Mattress replacement fire retardancy

MR System meets BS EN 597 -1: 1995, BS EN 597 -2: 1995 and BS 6807: 1996, Section 2, Ignition Sources 0,1 and 5
Overlay System meets BS EN 597-1: 1995, BS EN 597 -2: 1995 and BS 6807: 1996, Section 2, Ignition Sources 0,1 and 5

Cover fire retardancy	Fully enclosing covers fire retardant to BS 7175,
X-Ray	Tested to FDA 21 CFR Ch. 1 (4-1-95 Edition) HHS & CEI/IEC 601-1-3: 1994-07 (X-ray attenuation).
CPR	Chest compression for CPR purposes is not impeded

*Specifications are subject to change without notice

**Pentaflex mattresses are available in other customer made sizes. All sizes must be specified in increments of 2 cm

References:

1. Arjo Data on File: X-Ray Attenuation. Report Number 100076300, 2005
2. Arjo Data On File: Cardiopulmonary Resuscitation for Faom mattresses. Report Number 100076300, 2005.

October 2019 Only Arjo designed parts, which are designed specifically for the purpose, should be used on the equipment and products supplied by Arjo. As our policy is one of continuous development we reserve the right to modify designs and specifications without prior notice. ® and ™ are trademarks belonging to the Arjo group of companies.
© Arjo, 2019

At Arjo, we are committed to improving the everyday lives of people affected by reduced mobility and age-related health challenges. With products and solutions that ensure ergonomic patient handling, personal hygiene, disinfection, diagnostics, and the effective prevention of pressure injury and venous thromboembolism, we help professionals across care environments to continually raise the standard of safe and dignified care. Everything we do, we do with people in mind.

Arjo AB · Hans Michelsensgatan 10 · 211 20 Malmö · Sweden · +46 10 335 4500

www.arjo.com